



# Company Profile

**Shree Samarth Engineering**



## INDEX

❖ INTRODUCTION.	1
❖ CORE AREA.	2
❖ COMPANY PROFILE.	4
❖ OUR CLIENTELE.	6
❖ CONSTRUCTION SEGMENT.	8
❖ SERVICE RENDERED.	10
❖ MACHINERIES.	11
❖ GALLERY.	12
❖ CERTIFICATE-ISO 9001:2015-24.	23
❖ CONTACT DETAIL.	24



## **Introduction**

We are pleased to introduce ourselves as one of the leaders in Turn key Projects.

**SHREE SAMARTH ENGINEERING is an ISO 9001:2015 Certified Company** was established in year 2006 by Mr. Sachin Pawar having rich experience more than 20 year in Project & Engineering field. Prime objective of company is giving genuine design engineering construction and supply services and at a reasonable price in timely manner to various industrial sectors.

We integrate our manufacturing, fabrication & project management expertise to execute turnkey projects on EPC basis that are cost effective, reliable & custom-built to suit the needs of the client. Company is growing up by leaps & bounds, moving towards a profitable growth by exploiting new opportunities.

**SHREE SAMARTH ENGINEERING** is associated with many renowned companies as preferred channel partner. We have executed massive projects in **Mechanical & Civil field on EPC basis**. We serve the needs of Petrochemicals, Oil & Gas, Marine, transport (Heavybridge construction and erection), Process Industries, Chemicals, Pharmaceutical & Infrastructure sector as per their requirement.

Shree Samarth Engineering aspires for leading global market position by delivering world- class engineering products & services and upholding top-tier quality, ethical standards as a company's backbone for progressive growth.

Strength of Shree Samarth Engineering lies in trustworthy well experienced and qualified personnel, machineries, infrastructure and supplier network to meet quality standard and delivery schedule at most competition

## CORE AREA

- ❖ Supply and fabrication of Pressure Vessels, Tanks, Heat Exchangers, Jacketed / Limpet Coil Vessels, Stirred Vessels, Filters, as per Client Specifications & Requirement.
- ❖ Supply & fabrication of Pier , Pier Cap , T girder , I girder , hammer head Shutter & Miscellaneous formworks.
- ❖ Supply, fabrication and erection of heavy steel girders/ launching girders /liners / bridge structures.
- ❖ Site work: Fabrication, Assembly & Erection of Heavy Structures, Tank farm Piping, Storage tanks, onshore fabrication & offshore hook up of Top side Structure, Piping & Equipment's.
- ❖ Plant Commissioning & Hook up: Heavy machines & equipment, Columns, Pressure vessels, Heat Exchangers, Reactors, surge tank, Storage tanks, Thermic Fluid Heaters, Pumps, Process Piping, Tank farm, ETP plant & Piping, Fire Hydrant piping, Utility Piping, etc.
- ❖ Design, Supply and fabrication of EOT / JIB /GOLIATH crane up to 100T capacity.

## COMPANY PROFILE

Name of Company	SHREE SAMARTH ENGINEERING
Ownership Type	PROPRIETORY COMPANY
Year of Establishment	2006
Business Type	Engineering Mechanical Fabrication Services
Firm Registered under	Small Scale Industries
Quality Initiatives	ISO-9001 :2015 CERTIFIED COMPANY
Details of Key Person	Mr. SACHIN JAIKAR PAWAR Mr. NIKHIL WASUDEO NARKHEDE
Infrastructure Details:	Regd. Office – W 33/D Additional MIDC Anand Nagar, Ambarnath- (East), Thane- 421506 Maharashtra. GATIN :- 27AUVPP7990B1ZV. E mail: <a href="mailto:Sachin.pawar@shreesamarath-engg.com">Sachin.pawar@shreesamarath-engg.com</a>
Factory Address UNIT-1	W 33/D, Additional MIDC Anand Nagar, Ambarnath-(East), Thane 421501 Area - 12000 Sqr-feet. Overhead Crane 10 Ton. Power: 62 HP. Fabrication Cap: - <b>150-200</b> MT/Month.
UNIT-2	W 48/E Additional MIDC Anand Nagar, Ambarnath- (East), Thane-421501 Covered area – 12500 Sqr-feet Over headed EOT crane -10 Ton & 10 Ton Electric Power: 62 HP Fabrication Cap: - <b>200-250</b> MT/Month



## **Our Vision**

We will evolve as an internationally reputed & most trustworthy engineering firm utilizing the best engineering expertise in India.

## **Strength**

Strength of Shree Samarth Engineering lies in trustworthy well experienced and qualified personnel, machineries, infrastructure and supplier network to meet quality standard and delivery schedule at most competitive rate.

## **Health, Safety & Environment**

Management of Shree Samarth Engineering always consider that Safety & Health of our employees is one of the top priorities. SHE performance is reviewed & audited regularly. We always give importance to Safety first & are committed to continuous improvement in SHE.

Our Safety Officer imparts Safety awareness trainings to all employees & conducts Tool Box meetings. Inherent risks & integrated risks are assessed. Use of PPE's & safety norms are strictly followed. Unsafe acts & unsafe conditions are strictly monitored though out a project work.



## Our clientele:

1	M/s TATA PROJECTS LTD.- MUMBAI	SUPPLY AND, FABRICATION.	SUPPLY, FABRICATION OF HEAVY GIRDERS, PEB STRUCTURES FOR MUMBAI TRANS HARBOR LINK PROJECTS.
2	M/s L & T HEAVY CIVIL INFRASTRUCTURE LTD. (MUMBAI COASTAL ROAD PROJECTS – P1 AND P4)	SUPPLY, FABRICATION, PAINTING & TRANSPORTATION	PILING GANTRY STRUCTURES, TEMPORARY ACCES BRIDGE, PILE LINER.
3	M/S L & T HEAVY CIVIL INFRASTRUCTURE LTD. (WCFC-15A)	FABRICATION, SUPPLY, PAINTING & TRANSPORTATION	TEMPORARY STRUCTURE AND BUFFER BLOCK.
4	M/s AFCONS INFRASTRUCTURE LTD.	SUPPLY, FABRICATION & PAINTING	HANDRAILS FOR PHUENTSHOLING TOWNSHIP PROJECT & FABRICATION OF GANTRY FOR CHENAB BRIDGE.
5	M/S BUILTRITE CONSTRUCTIONS (I) PVT. LTD. (MUMBAI METRO RAIL CORPORATION)	SUPPLY, FABRICATION, PAINTING AND TRANSPORTATION AND ERECTION	CORRIDOR BRIDGE, ACCESS STAIRCASE AND OTHER STRUCTURAL WORKS
6	M/S SHREE VENKATESHWARA INFRASTRUCTURES (I) PVT. LTD. (MUMBAI METRO RAIL CORPORATION)	SUPPLY, FABRICATION, PAINTING AND TRANSPORTATION AND ERECTION	ACCESS BRIDGE AND STEEL STAIRCASE AND OTHER ROOF STRUCTURES.
7	M/S L & T HEAVY CIVIL INFRASTRUCTURE LTD. (DABHOL BREAK WATER PROJECTS))	SUPPLY, FABRICATION, PAINTING AND TRANSPORTATION	SPREADER PLATFORM 17 MTR X 3.5 MTR WIDTH 1 MTR HEIGHT – WT. 32 MT (ONE UNIT)
8	PHOENIX ENGINEER.	FABRICATION	HEAT EXCHANGER
9	UREKA FABRICATORS	FABRICATION	LPG STORAGE TANK WITH TRAILER MOUNTING AND PIPING SKID
10	M.P. ENGINEERING CONSTRUCTIONS (INDIA) PVT. LTD.	FABRICATION	ADSORBER TANK AND COLOMN (BPCL /EIL)

11	CUBIC ENGINEERING PVT. LTD. (JSW)	FABRICATION	STRUCTURAL FABRICATION
12	KARAN ENTERPRISES	FABRICATION	TURNKEY PROJECT
13	CARLTON INDUSTRIAL ENGINEER	FABRICATION	OIL STORAGE TANK / REACTOR /PRESSURE VESSELS
14	P L ADKE (GOVT. CONTRACTOR)	FABRICATION	CIVIL PROJECT & FABRICATION
15	MELTECH CRANES PVT. LTD.	FABRICATION	ALL TYPES OF EOT CRANE
16	OILEX ENGINEERS	FABRICATION	PRESSURE VESSELS
17	M.D. ENGINEERS	FABRICATION	CEMENT SILO
18	M/S CARGILL (I) PVT. LTD. - KURKUMBH	SUPPLY AND FABRICATION	FABRICATED SELF-SUPPORTED CHIMNEY TOP DIA 1.5 MTR X 52 MTR HEIGHT.
19	M/s RPS INFRAPROJECTS Pvt.Ltd.	SUPPLY & FABRICATION	FABRICATION OF PORTAL STEEL BEAM & I GIRDERS.
20	M/s MILAN ROAD BUILD TECH LLP	SUPPLY & FABRICATION	FABRICATION OF FORMWORK
21	M/s AG INFRA PROJECTS	SUPPLY & FABRICATION	FABRICATION OF FORMOWRK



## Construction Segment

### Industrial structures:

- MOC : IS 2062 E250, E350, E450 Gr: - Br. B0
- Construction Code : IS 800-2007.

### Super Structure & Temporary Structure for InfraProjects:

- MOC : IS 2062 E250, E350, E450 Gr: - Br. B0
- Construction Code : IS 800-2007 & IS 7215-1974

### Pressure Vessel/Equipment:

- Construction Code : ASME SECT VIII – DIV 1/PD 5500/IS 2825
- MOC : SA 515, 516 Gr. 60/70, 304L, 316, 316L, 304L, 316, 316L.
- Thickness THK. : CS up to 30 mm THK & SS up to 20 mm
- Diameter : Up to 5000 mm

### Piping fabrication & Assembly:

- MOC : IS1239, A106, API 5L, A234 Gr B, SS304, SS316. CS
- Construction codes : ASTM A530

### Storage Tank:

- Construction Code : IS 803 & API 650
- MOC : IS 2062 Gr: B & SS.
- Thickness : 5mm to 20 mm.
- Diameter : Up to 10 Mtr.

### Heat Exchanger:

- Type of Exchangers condenser.: Fixed tube sheet, floating head, Double pipe,
- MOC : CS & SS
- Construction expansion. : Expanded welding/seal welding/light
- Tube sheet Thk Range : Up to 200mm
- Tube Size : 20 mm OD & 25 OD
- Tube THK : 1.5mm/2mm/2.5mm/3.15mm
- No. of Tube : Up to 1000 Nos

## **Services Rendered**

- ❖ Fabrication & Erection of Technological structures, Pedestrian Skywalk, Pre-Engineered Buildings, Pipe racks, Catwalk Bridges, Top side Structures, Bridge Girders for Road Flyovers.
- ❖ Fabrication & Erection of Storage tanks, Silos, Chimneys, Stack, Ducts, Process Equipment in CS & SS.
- ❖ Fabrication & Erection of Process Piping, Utility Piping, ETP Piping in material IS1239, A106 Gr B, SS304, SS316, PP, PVC & HDPE.
- ❖ Pre fabrication of Flow Arms, Piping Spools in A106 Gr-B Sch40 to Sch160 with 100% RT.
- ❖ Commissioning & Hook up: Plant & machineries, Heavy equipment, Columns, Pressure vessels, Heat Exchangers, Storage tanks, Pumps & Pipe lines, Condensers, Chimneys, etc.

### **QUALITY ASSURANCE:**

Approved Quality Assurance Plan is followed stringently throughout the manufacturing process. Raw materials, bought out items and consumables are purchased from approved vendors only. Raw materials are tested for Physical & Chemical properties at NABL approved Laboratories. Welding machines and Measuring instruments are calibrated. Welder tests are carried out as per ASME and welding is carried out by certified welders only. Components are manufactured under strict Quality Control. At every stage component are inspected for correctness by our Quality Assurance Engineer. Nondestructive tests like DPT, RT, UT, MPT, DFT are carried out by qualified ASNT Level II personnel as per code requirement. We have worked with reputed Inspection Agencies like IRS, TUV, BV, EIL, Jacobs, Rina, ONGC, ECC, Electromech, SCPL, Mott Mac, CNW, DMRC, etc.

## **TESTING FACILITIES**

- |   |   |
|---|---|
| 1. Hydraulic Testing                      | 6. Ultrasonic Thickness Gauge ('D' Meter) |
| 2. Pneumatic Testing                      | 7. Ultrasonic Testing (UT)                |
| 3. Dye Penetrant Testing (DPT)            | 8. Radiography Testing (RT)               |
| 4. Magnetic Particle Testing (MPI)        | 9. Hardness Testing                       |
| 5. Positive Material Identification (PMI) | 10. Mechanical & Chemical Testing         |

## Machineries

Sr. No	Item Description	Qty	Sr.No.	Item Description	Qty
1	Welding Rectifiers (SMAW)	14	2	SAW Welding Machine (SAW)	2
3	TIG Welding Machine (GTAW)	4	4	MIG Welding Machine (GMAW)	20
5	Welding Machine- Inverters	6	6	Pillar Drilling Machine	2
7	Magnetic Drilling (All cut) M/c	8	8	Radial Drilling Machine	1
9	Electrode Drying Oven-400 AMP	2	10	Electrode Drying Oven-300 AMP	2
11	Electrode Drying Portable Oven-150 AMP	2	12	Hydraulic Press 250 TonX2.5Mtr	1
13	Air compressor (150CFM)	2	14	Chain pulley Capacity 10, 5, 3, 2 & 1 Ton	2
15	Overhead Crane 10 TON	2	16	Hydraulic Jacks 50 Ton	2
17	Spray Painting Set up	4	18	Flexible shaft grinders	3
19	Hand tools & Equipment	8	20	Bench grinders	4
21	Band Saw cutting	2	22	Threading wrench up to 2"	3
23	Power press 50TON & 30 TON	2	24	Hand shearing Machine	1
25	Pipe cut off machine 14"	6	26	Hand operated press (10 ton)	1
27	Torque Wrench, Impact wrench Manual & Automatic	1	28	Hydraulic testing (10000psi)	1
29	Gas Cutting sets	15	30	CNC Plasma machine 130A 6300 x 2500 bed size (25 mm Capacity plasma) ( 80 mm gas cutting )	1
31	Grinding AG7, AG5, AG4	8	32	PUG Cutting Machine	10

## GALLERY



Job Details: Spreader Crane Barge for Dabhol Breakwater  
project -KonkanSize: 20 Mtr Long x 3.5 Mtr width – 2 Unit (Weight of each 32MT)  
Client: L& T Heavy Civil Infra  
Scope: Supply, fabrication, sand blasting painting and Transportation.





CLIENT: M/S MP ENGINEERING (P)LTD.A/c HPCL Chennai.  
JOB DETAILS: ADSORBER COLUMN & ABSORBER TANKS  
SCOPE: FABRICATION, SAND BLASTING & PAINT





Client: M/s CARLTON INDUSTRIAL ENGINEER LLP  
Engineering Consultant: Petro engineering &Construction (p) Ltd.

Owner: Vedanta Ltd.

Scope: Supply & Fabrication of produced water surge vessel - 4Nos Size: Dia 3800 mm x 14.3 mtr long (End to end)





PROJECT: SUPPLY, FABRICATION OF CANTILEVER PILING GANTRY AND DECK  
PANEL (40 MTR SPAN WITH WEIGHT 370 MT) FOR MUMBAI COASTAL ROAD P-1  
CLIENT: M/S L & T ECC





PROJECT: Nagpur Metro.  
SCOPE: Supply & Fabrication of FOB Girders.



Project: Kalanagar Flyover

Job Details: Supply, Fabrication, assembly & Erection of girders.





Client: M/s Bultrite Construction Ltd-Mumbai  
Projects: Kharghar Metro Projects, Fabrication, supply and assembly staircase  
Qty: - 220 MT



Client: M/s Cargill (1) Pvt Ltd-Kurkumbh.

PROJECT: Self supported chimney top dia 1500 mm x 52 Mtr height for 25 TPH boiler

Scope: Design, Engineering and Manufacturing.





Project: - Design and construction of special bridge across the river Chenab at Km 50,800' on Katra-Laole section of Udhampur-Srinagar, Baramulla rail-link project. (Inspection Gantry).

Client: - Chenab bridge Project undertaking (CBPU), AFCONS, HebenKraft





Project: - Rail over Super structure for Widening & Improvement of naigoan-juchandra-bopane road.

Client: - AG Infra projects Ltd.

Qty: - 420 MT



Client: M/s IOCL, Pollydrill  
PROJECT: Fabrication of 1000 CFT Silos  
Size: - OD 2700mm & HT 6882mm





Project: - Mumbai Metro projects line-4, Wadala to kasarvadavli metro project  
Client: - MILAN ROAD BUILDTECH LLP  
Detail: - Formwork for T girder Formwork.





Project: - IMPLEMENTATION OF IMPROVEMENT OF CHHATRAPATI SHIVAJI MAHARAJ  
INTERNATIONAL AIRPORT DOMESTIC TERMINAL(T1)  
CLIENT: - RPS INFRAPROJECTS PVT. LTD.  
DETAIL: - FORMWORK FOR I GIRDER SHUTTER & PIER.





Project: - Mumbai Metro projects line-4, WADALA TO KASARVADAVLI METRO PROJECT  
Client: - MILAN ROAD BUILD TECH LLP  
Detail: - Formwork for CROSS ARM





Project: - Mumbai Metro projects line-4, WADALA TO KASARVADAVLI METRO PROJECT

Client: - MILAN ROAD BUILDTECH LLP

Detail: - Supply & fabrication of pier shutter.





Project: - Implementation of improvement of Chhatrapati Shivaji Maharaj international airport/Domestic terminal T1 junction by Construction of vehicular underpass & widening of

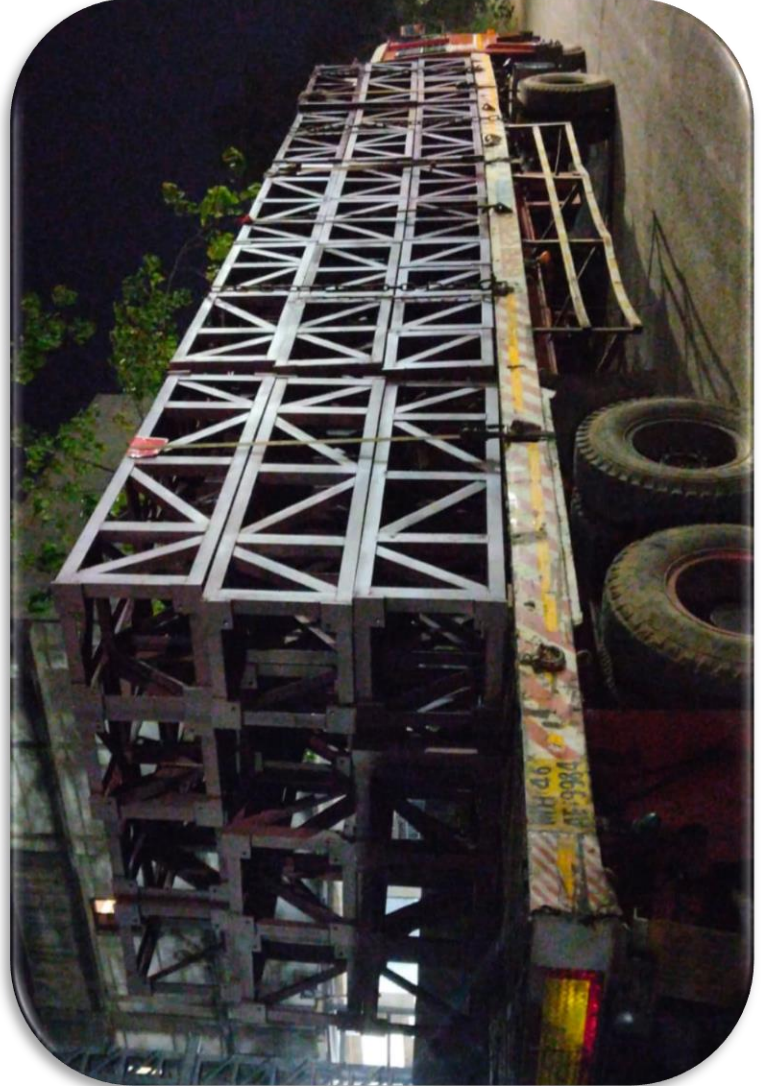
Client: - RPS Infraprojects Pvt. Ltd.

Detail: - Supply & fabrication of Portal steel beam along with steel column.

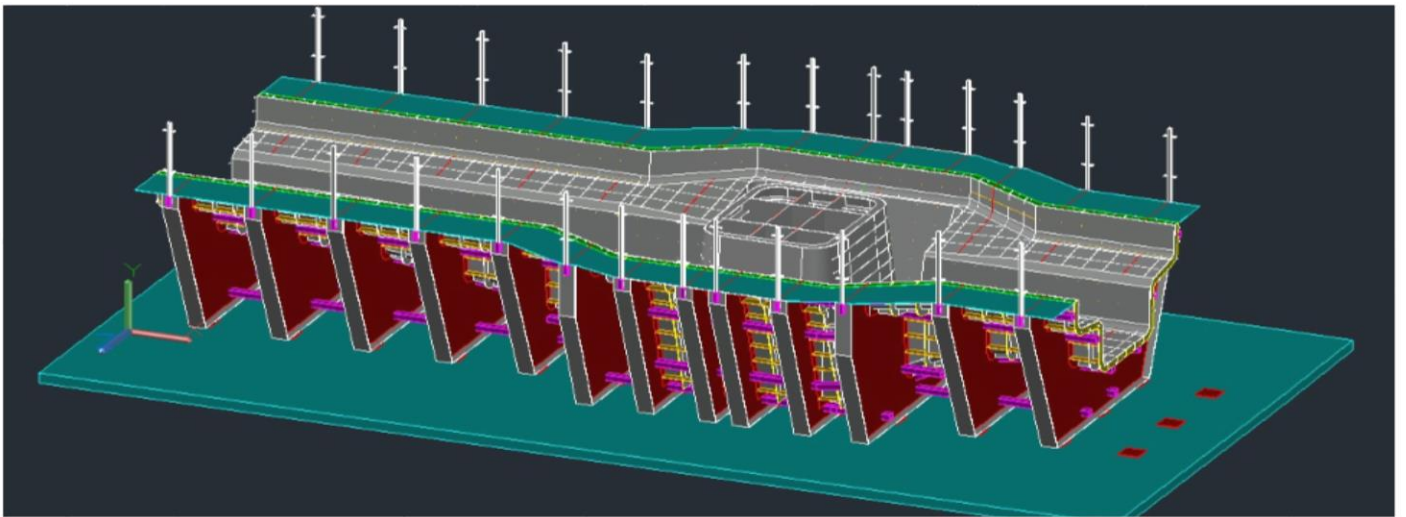
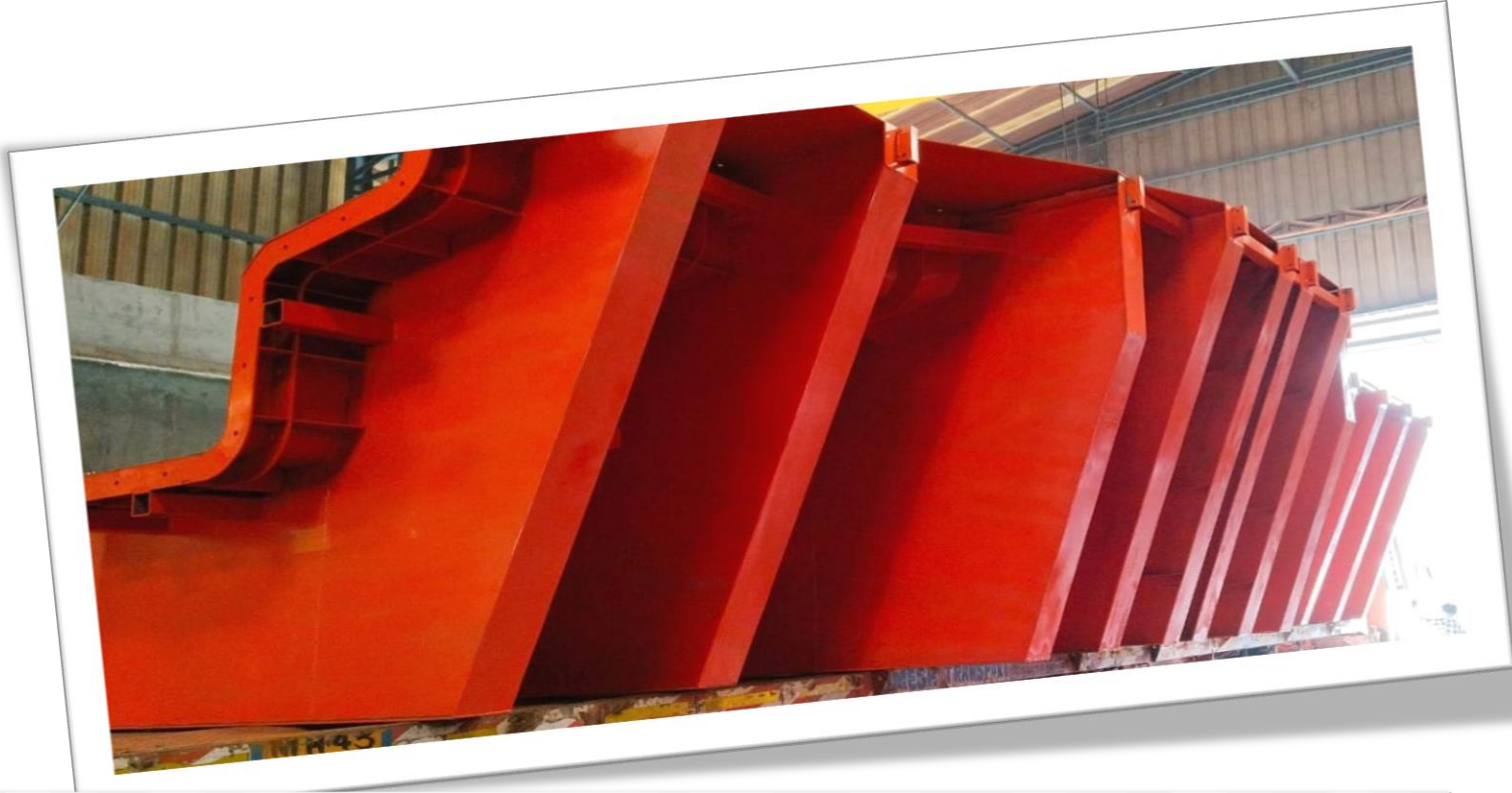


Project: - Mumbai Metro projects line-4, WADALA TO KASARVADAVLI METRO PROJECT  
Client: - MILAN ROAD BUILDTECH LLP  
Detail: - Supply & fabrication of hammer head shutter along with staging set.





Project: - Mumbai Metro projects line-4, WADALA TO KASARVADAVLI METRO PROJECT  
Client: - MILAN ROAD BUILDTECH LLP  
Detail: - Supply & fabrication of Temporary structure for erection.



Project: - Mumbai Metro projects line-4, WADALA TO KASARVADAVLI METRO PROJECT  
Client: - MILAN ROAD BUILDTECH LLP  
Detail: - Supply & fabrication of Pier CAP.



  
**CERTIFICATE**

*This is to Certify that the  
 Quality Management System  
 of*

**M/S. SHRI SAMARTH ENGINEERING**  
 Plot No. W-73/A, Anand Nagar, MIDC, Additional Ambernath,  
 Dist- Thane- 421506, Maharashtra, India

has been independently assessed and is compliant  
 with the requirements of  
**ISO 9001:2015**

This certificate is applicable to the following product or service ranges:  
 Providing services for supply, fabrication and erection of Heavy Engineering Works  
 (In Metal of construction for MS /SS /CS /GI /CI /DI) i.e, Pressure Vessel, Heat Exchanger,  
 Reactors, Bridge and all kinds of piping, Structures, Storage Tank, Chimney,  
 Ducting and Complete BOP and Turnkey Project.

IAF Code: 17                      NACE Code: 25.50, 25.99

**:: Certificate No :: IN117661A**

Date of initial registration	21 January 2020
Date of this certificate	21 January 2020
Surveillance audit on or before	20 January 2021
Recertification Due / Certificate expiry	20 January 2023

This Certificate is property of LMS Certifications and remains valid  
 subject to satisfactory surveillance audits.



  
**Director**



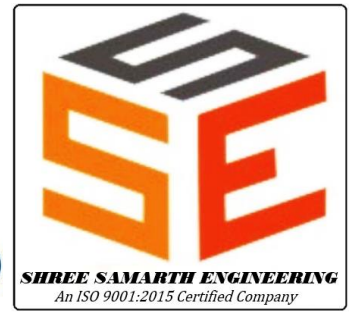
  
 006-CB-01/5

  
 006-CB-01/5



**LMS Certifications Private Limited**  
 1, Anandnagar, Opp. Kukrail Picnic Spot Gate,  
 Farid Nagar, Lucknow - 226015, U.P. (INDIA)  
 Phone : +91-9654645454  
 Web : [www.lmscertifications.com](http://www.lmscertifications.com)  
 Email : [info@lmscertifications.com](mailto:info@lmscertifications.com)

LMS/DATA/10/01/11/81/02



## CONTACT DETAILS

SACHIN JAIKAR PAWAR

Nikhil Wasudeo Narkhede

MOB: +91 9921655560

+91 9767422096

Email: [Sachin.pawar@shreesamarath-engg.com](mailto:Sachin.pawar@shreesamarath-engg.com)  
[nikhil.n@shreesamarath-engg.com](mailto:nikhil.n@shreesamarath-engg.com)

# THANK YOU